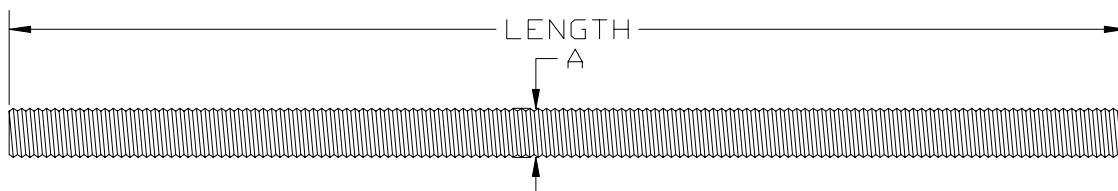
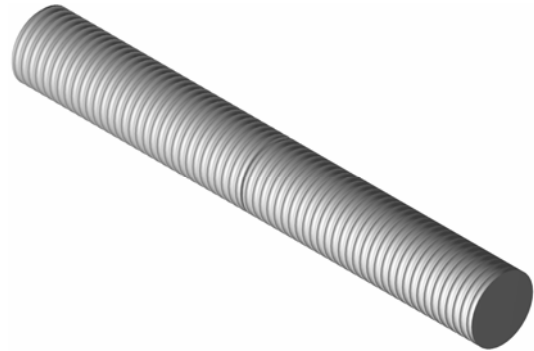


## Hanger Rod Continuous Thread

## Part # 205



**SIZE RANGE:** 1/4" through 1 1/2" inch diameter. Stocked in six, ten and twelve foot lengths. Other even foot lengths can be furnished upon order.

**MATERIAL TYPES:** Carbon Steel Rod (Threaded complete length).

**FINISH:** Black, Galvanized, or coated to customer specifications.

**MAXIMUM TEMPERATURE:** 650°F

**ORDERING:** Specify rod diameter, length, part number, name, and finish.

### Loads (lbs) • Dimensions (inches)

Rod Size A	Maximum Load	Weight (approx) lbs Each
	650° (F)	
1/4	240	0.12
3/8	730	0.30
1/2	1350	0.53
5/8	2160	0.84
3/4	3230	1.20
7/8	4480	1.70
1	5900	2.30
1 1/4	9500	3.60
1 1/2	13800	5.10